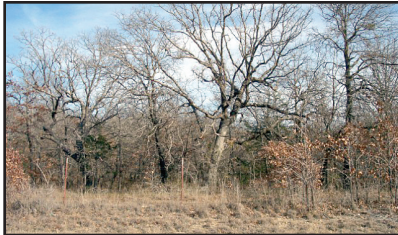


TEXOMA AGENCY INC

www.texomaagency.com

(OFC.) **580-564-2346**

SUBDIVISIONS - SOME WITH LAKEFRONT



DEER CREEK ESTATES

Prices from \$39,000 to \$79,000

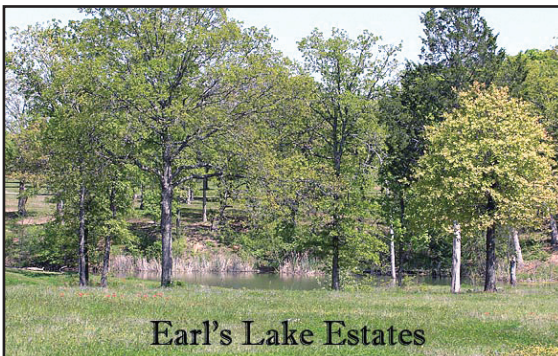
12 Restricted tracts ranging from 3 to 7.5 acres some with lake view. Tracts are located off Enos Rd. and within 6 miles to Buncombe Creek Marina and 4 miles to Hwy 377. A free boat slip rental from Cedar Bayou Marina will come with the property. Owner financing is available to qualified buyers with 20% down for 7 years at 7% interest.



EDGEWATER ESTATES

Lots at Texoma - \$20,000

This new Edgewater Estates Addition on Lake Texoma is a restricted subdivision located less than one mile from Lake Texoma. All lots are approx. 1-1.5 acres. Great sandy soil, good trees and near some of the sandiest beaches on the lake. All lots have access to the sandy shoreline of Lake Texoma.



Earl's Lake Estates

EARL'S LAKE ESTATES

From \$20,000 to \$22,000
This gorgeous addition is located approximately two miles from Buncombe Creek Resort and Marina. The property features lots of mature trees, level building sites, and several stocked fishing ponds. This restricted addition allows newer manufactured homes, as well as site-built homes.



THE WOODLANDS

Prices range from \$20,000 to \$50,000

Come visit one of the newest, premier additions on Lake Texoma! Many homesites to choose from on good sandy soil. All lots have lake access, and many have frontage along the Corps of Engineer's property. There is good sandy shoreline within walking distance of property. All lots are restricted to site-built homes only. These gorgeous homesites have electric and water already in place and paved roads.

LAKEFRONT & LAKEVIEW LOTS AVAILABLE Call for prices!!!

- **Kingston** - In town lots. **\$5,800.** MLS#7924.
- **Tishomingo** - 0.45 acre commercial lot, one block off main street. **\$7,500.**
- **Kingston** - Nice lot in town 103x200. Within 1/2 block to city park and pond. **\$9,900.**
- **Kingston** - 3 Treed lots in town approx. 1/2 acre. **\$9,900.**
- **Oakview** - Nice level treed lot. 70x144. Restricted to site built homes. **\$14,500.**
- **Twin Ponds** - Lakefront & Lakeview lots. 2 Lots to choose from **\$20,000 each.**
- **Texoma Landing** - Lot in a gated restricted addition. For an additional amount a boat slip may be purchased. **\$25,000.**
- **2.5 Acres Near Lake** - Horses allowed and no restrictions. **\$28,900.** MLS#11698.
- **Oakview East** - 2 Nice lots within 1 block of lake and sandy beaches. Restricted to Site Built Homes. **\$32,000.**
- **McBRIDE** - 3 Level lots joining Corp lake property. 3 Blocks from McLaughlin Creek. **\$39,000.** MLS#12522.
- **Sanders Island** - Great location for this 1 acre level lot ready to build on. Close to Lake and boat ramps. **\$42,000.**
- **Beachview** - Nice .75 acre lot in gated community. **\$42,000.**
- **Great Building Site** - 2 acres in a restricted subdivision near Chickasaw Pointe Golf Course. **\$45,000.**
- **McDuffee Road** - 1.7 acre treed lot with good building site. **\$48,000.**
- **Lakeview Homesite** - .65 acre restricted lot near Catfish Bay. **\$49,000.**
- **Downtown Kingston Lots** - 8 Commercial lots in downtown Kingston w/utilities available. Approximately .62 acres. Nice flat lots ready to build on. **\$56,000.**
- **Edgewater Estates** - .75 Acres backing up to Corp. Land. A short five minute walk from sandy beaches. **\$59,000.**
- **Commercial Lot on Hwy 70** - Nice level lot with 176' of Hwy. frontage. **\$59,900.** MLS#11925.
- **Lake View Homesite** - Gorgeous views from this restricted 3/4 acre lot. Located in a gated addition and very near sandy beaches on Lake Texoma. **\$82,500.**
- **Soldier Creek** - 1.58 acres bordering Corps on 2 sides, wooded with plenty of wildlife. **\$159,900.** MLS#9093.